

Flip-over titanium rod filter HTB Series

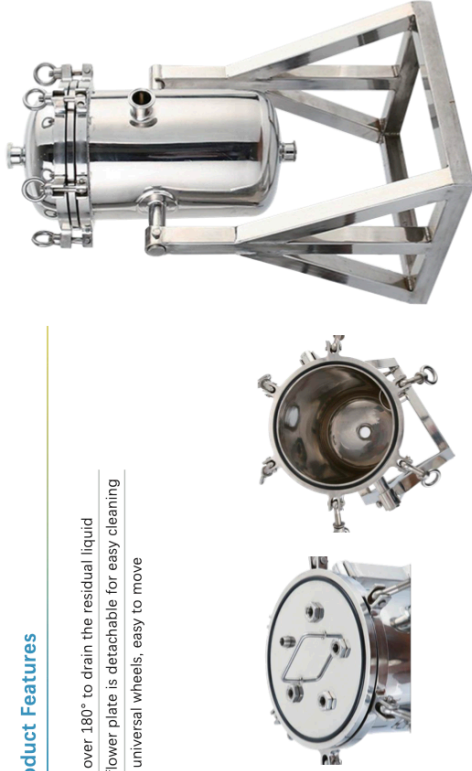
The housing of the titanium rod filter is made of 304 or 316L stainless steel, and the titanium metal or stainless steel filter cartridge is used as the filter element, which can achieve a good solid-liquid separation effect by filtering the liquid with high solid content. It has the advantages of high temperature resistance, strong acid, strong alkali, corrosion resistance, and the filter cartridge can be regenerated repeatedly. It is widely used in decarbonization filtration in large infusion and injection production lines.

Product Features

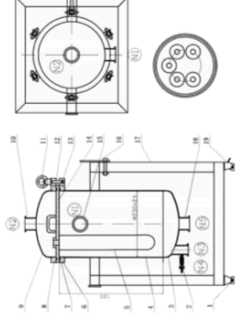
Turn over 180° to drain the residual liquid

The flower plate is detachable for easy cleaning

With universal wheels, easy to move



Dimensional Drawing



Ordering Information

HTB 1 2 3 4 5 6 7 8 9

Block 1

Material
04=304
06=316L

Block 2

Quantity Of Filter Cartridge
03=3Pcs
05=5Pcs
07=7Pcs
09=9Pcs
11=11Pcs

Block 3

End Cap Type (Filter cartridge)
M=20
M=30

Block 4

Length (Filter cartridge)
10=10inch
20=20inch
30=30inch
40=40inch

Block 5

Cylinder Connector
F=Eyebolt

Product Specification

Housing material	304,316L
Exhaust valve / Drain valve	304,316L
Clamp / eyebolt	304
Supporting feet	304
Seal ring / gasket	Silicone , Viton, EPDM, PTFE
Design pressure	0.8Mpa
Maximum working temperature	150°C
Cylinder connection	Clamp / eyebolt
Input /output	Quick opening / Flange
Exhaust valve / Drain valve	1/4" Hose connector
Pressure gauge	1.5" Quick opening
Polishing type	Mechanical polishing, Electrolytic polishing
Polishing accuracy	Internal Ra <0.40 μm and external Ra <0.80 μm

Block 6

Input/output Connector Type
K=Quick opening
F=Flange

Block 7

O-ring Seal Material
S=Silicone
E=EPDM
V=Viton

Block 8

Input/output connector diameter
K38=Ø38 (3-5Pcs)
K50=Ø51 (3-5Pcs)
F32=Flange DN32
F40=Flange DN40
F50=Flange DN50
F65=Flange DN65
F80=Flange DN80

Block 9

Surface Treatment (Internal)
A=Mechanical polishing
B=Electrolytic polishing